



Small-scale production



Cost-efficient prototyping



Prosthetics & orthotics



Pre-surgical planning models



Educational aids

# zortrax

## M200 Plus

### Basically reliable 3D printer



Zortrax M200 Plus 3D printer

Extrusion



Single

Resolution

90-390 microns



Build volume

200 x 200 x 180 mm  
7.9 x 7.9 x 7.1 in

#### › Designed for hard work

The M200 Plus LPD 3D printer has been made with high-quality components to offer class-leading reliability and low maintenance costs. This machine is a versatile, affordable 3D printing solution that can work for many hours without a single failure.

#### › Fail-safe design

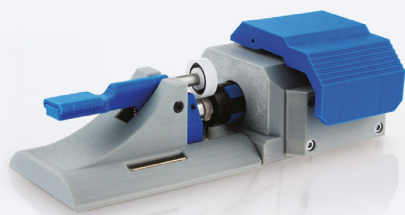
The industrial-grade extruder in the M200 Plus is compatible with a wide range of filaments. Functionalities like efficient cooling system or a heated build-platform guarantee dimensional accuracy while the filament endstop mechanism pauses the print and notifies the user when the filament runs out.

#### › Made for 3D printing farms

Large clusters of remotely controlled 3D printers can offer significant prototyping and small to medium scale production capabilities. The M200 Plus has Wi-Fi and Ethernet connectivity which make it great as a basic manufacturing unit in a 3D printing farm.

#### › Easy to control

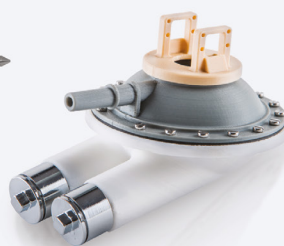
The M200 Plus can be operated remotely or through an intuitive touch screen fitted in the front panel. The printing process can be monitored at all times with a camera installed in the printing chamber. The machine can be set up and operated with no prior 3D printing experience.



Medical winch for fiber laser closing varicose veins



End-use drill-driver casing



Artificial human heart model



Functional headphones prototype

## DEVICE

Build volume	200 x 200 x 180 mm (7.9 x 7.9 x 7.1 in)
Material container	Spool
Material diameter	1.75 mm (0.069 in)
Nozzle diameter	0.4 mm (0.016 in) – standard / 0.3 mm (0.012 in) / 0.6 mm (0.024 in)
Support	Mechanically removed - printed with the same material as the model
Extruder	Single (compatible with demanding materials like TPU or nylon)
Extruder cooling system	Radial fan cooling the extruder block; two fans cooling the print
Hotend	Single, V3
Platform	Heated; perforated and glass are applicable
Material endstop	Mechanical
Connectivity	Wi-Fi, Ethernet, USB
Operating system	Android
Processor	Quad Core
Touchscreen	4" IPS 800 x 480
Camera	Yes
External materials	Applicable

## SOFTWARE

Software bundle	Z-SUITE
Supported input file types	.stl, obj, .dxf, .3mf
Supported operating system	Mac OS up to Mojave version / Windows 7 and newer versions

## PRINTING

Technology	LPD (Layer Plastic Deposition) – depositing melted material layer by layer onto the build platform
Layer resolution	90-390 microns
Minimal wall thickness	400 microns (for 0.4 mm nozzle)
Platform levelling	Automatic measurement of platform points' height

## TEMPERATURE

Maximum printing temperature (extruder)	290° C (554° F)
Maximum platform temperature	105° C (221° F)
Ambient operation temperature	20-30° C (68-86° F)
Storage temperature	0-35° C (32-95° F)

## ELECTRICAL

AC Input	110 V ~5.9 A 50/60 Hz; 240 V ~2.5 A 50/60 Hz
Maximum power consumption	320 W

## IN THE BOX

3D Printer, Hotend V3, Side Covers, Z-SUITE, Starter Kit, Z-ULTRAT, Spool holder, USB memory stick